



HEP

HOTEL ENERGY PORTAL

Hospitality-Driven

Utilities Management





Turn your Utilities Data into insights & Manage your Efficiency Projects

Hotel Energy Portal

HEP
HOTEL ENERGY PORTAL

- Dashboard
- Utilities
- Reports
- Knowledge Base
- EMA
 - Efficiency Measures Actions
 - Sub Category & EMAs
- Sites
- Users
- Discussion
- Import Utilities
- Energy Audit
- Select Site
 - Milano

LANCASTER HOTEL - MILANO

Home > Efficiency Measures Actions

Efficiency Measures Actions

Search By Sub Category Name

Select Site Select Category Select Region

| Sr. No. | Category | Sub Category | Site | EMA Name |
|---------|-------------------|--------------|-----------|-------------------|
| 1 | Building Envelope | Roof | Milano | Cool Roof |
| 2 | HVAC | Chillers | Marrakech | Chilled Water Ter |
| 3 | HVAC | Chillers | Mauritius | Chiller retrofit |
| 4 | HVAC | Chillers | Marrakech | Chiller retrofit |
| 5 | HVAC | Chillers | Beirut | Chillers Sequenci |

HEP is a unique portal for Hospitality Groups as it was built bottom to top with their operation in mind and drawing from EEG's two decades of energy auditing large Hotel properties. It makes all Utilities data trends understandable and actionable while it relates to the specificity of hotels' parameters. It combines data analytics with a comprehensive Efficiency Measures Knowledgebase, an Efficiency Action Management Centre, an internal Forum along an optional IoT Connector enabling Gateways to gather real time and historical data from any metering device or equipment.

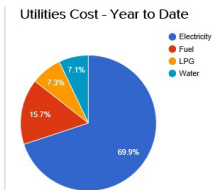
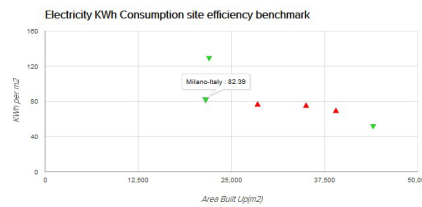
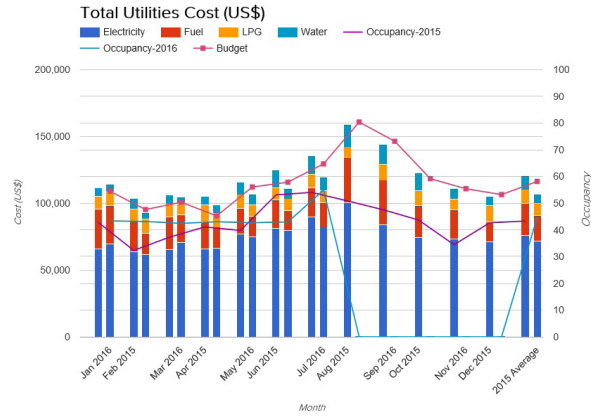
Data Analytics

The energy data analytics industry may be in a transition phase as it adjusts to the avalanche of numbers coming from increasing common sub-meters and Internet of Things (IoT) platforms that are being introduced aggressively. On the other hand, Hotel properties have a large number of data that are both utilities and operations related which need to be correlated, analyzed and understood. With HEP, users can:

Spend more time Analyzing, Less Processing: Productivity and Time efficiency are all about spending more time analyzing data and less time processing it.

Enjoy a comprehensive Report Module: HEP's reporting is based on more than 40 site specific reporting in addition to YTD, Annual and 5 years' downloadable reports, along a whole set of Group's portfolio based reporting. HEP's data analytics provides Business and Energy Intelligence features which can also be customized to fit any group's needs.

Have dashboards accessed anywhere: HEP is a SaaS which means it can be accessed from any browser.



Knowledgebase & Efficiency Measures Action (EMA) Centre

HEP HOTEL ENERGY PORTAL

- Home
- View
- Edit

Operation

- Energy Supply & Mgmt
- HVAC
- Steam & Hot Water Systems
- Lighting
- Building Envelope
- Water
- others

Operation

Employee Engagement, Guests engagement and communications, along the property's general Sustainability Development programs play a central role in the overall utilities optimization .

[View Operations action groups](#)

Energy Supply & Management

From the appropriate utilities contract negotiations to the demand management , renewable energy production and CHP, this category covers all the energy supplies management.

[View Energy Supply & Mgt action groups](#)

HVAC

HVAC systems are recognized to be the largest energy end users in hotel properties globally. Whether it is for cooling, heating or fresh air, the combination of the related mechanical equipment provides substantial Efficiency

Measures opportunities

[View HVAC action groups](#)

Steam & Hot Water Systems

Steam and Hot Water production are large energy users in Hotels. From the Domestic Hot Water to the space heating and the steam used in Laundry operations, this is a crucial part of the overall energy management of Hotels.

[View Steam & Hot Water action groups](#)

Data analytics is incomplete if it isn't also correlated to implemented Efficiency Measures . On the other hand, there is always a difficulty for Hospitality Groups to align all properties on efficiency projects or in fact to track the various actions taken. This is why HEP includes a set of features that will help each property as well as the regional or group management to drive efficiency projects forward. These are:

Dynamic Knowledgebase: It is a technical library that is expandable and covers all key categories such as HVAC, Steam & Hot Water Systems and operations. Every category is developed through a set of sub categories and all the related Efficiency Actions.

Efficiency Measures Action (EMA) Centre: Every property can add EMAs from the library and manage them through the available EMAs Centre whereby every measure can be tracked. From a Regional or Group Management perspectives, EMAs can be tracked across individual properties , regions and categories.

Energy Audit Centre: Energy audit reports are stored in a specific section while the last audited date is visible on the main Dashboard. Both help have central access to key information while tracking the lagging properties.

IoT Live Metering & Beyond

From local hardware to cloud interface. HEP's optional IoT module revolves around Gateways that communicate with multiple devices, equipment and protocols. The potential metering solution enables remote real-time measurement and data acquisition from different types of meters (eg: energy, gas, water, sewage, air quality) through an IoT Connector or through standard Ethernet or GPRS communication interface.

The configuration is flexible as it can virtually enable measuring and/or connecting to any type of device or equipment bringing further depth to HEP.



Forum

HEP's Discussion board is meant to enhance the cooperation between all engineering departments of a Hospitality Group and push the overall cooperation and dynamism into higher levels. It can be easily customized to include subtopics related to the key technical operation of a Hotel property such as HVAC, Energy procurement or just assistance as seen in the below snapshot.

HEP's Discussion board is meant to enhance the cooperation between all engineering departments of a Hospitality Group and push the overall cooperation and dynamism into higher levels. It can be easily customized to include subtopics related to the key technical operation of a Hotel property such as HVAC, Energy procurement or just assistance as seen in the below snapshot.

| Discussion Post Title | Created By | Reply Count | Last Update On |
|-----------------------------------|------------|-------------|---------------------|
| Assistance request | | | |
| Networking event | PAWLA G. | 0 | 2018-02-13 12:57:31 |
| Geothermal project assistance | Tam C. | 0 | 2018-05-29 13:19:55 |
| Announcement | | | |
| Update MLP forecast | Syab D. | 1 | 2018-05-18 16:19:43 |
| BMS & Controls | | | |
| Building Orders Sequencing in BMS | JP N. | 2 | 2018-05-29 14:12:07 |
| Energy Procurement | | | |
| Choosing the best Energy Supplier | Bar K. | 0 | 2018-05-29 14:08:09 |
| Renewable Energy | | | |
| PV Power Plant | Andrea S. | 2 | 2018-05-13 14:19:40 |
| Boilers | | | |
| Business Boilers | Bar K. | 1 | 2018-05-14 14:46:33 |
| HVAC | | | |
| Cooling Towers Assistance | | 0 | 2018-04-14 14:28:12 |

Hospitality Driven Utilities Management

HEP is a service of EEG - Energy Efficiency Group



EEEG
ENERGY SERVICES
Customer-Driven Energy Solutions



HQ: Aya Bldg, 10th Floor, Dora Highway
PO Box: 90-1080 Beirut, Lebanon



hq@eegroup.info



+961 1250840



www.eegroup.info